



URETEROSCOPY SOLUTIONS

Single Use Ureteroscope

Disposable ureteroscope has excellent performance, no repair and maintenance cost, no disinfection cost, hygienic and safe, and avoids cross-infection.

Ergonomic

Effectively relieve fatigue during surgery

275°

275°excellent deflection in both directions

True 1:1

1:1implementation of hand movements through to the distal end

Luer Lock

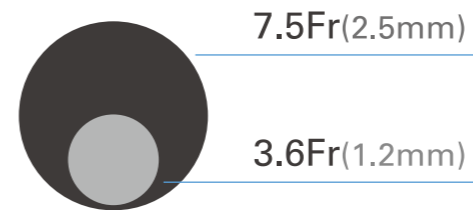
Included in every scope



7.5Fr Ultra Slim Insertion Tube

Compatible well with adjustable suction access sheath, bigger space to improve suction efficiency, more irrigation flow per time.

7.5Fr



Bullet Design

Drilling into the ureter is easier



Optimized Graphics

CMOS+2LED image technology

Product Parameters

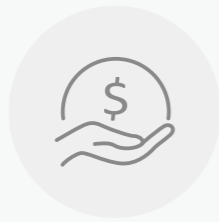
Model	UR-F1	UR-F2
Insertion Tube Outer Diameter	8.5Fr (2.8mm)	7.5Fr (2.5mm)
Working Channel Diameter	3.6Fr (1.2mm)	3.6Fr (1.2mm)
Working Length of Shaft	650mm	650mm
Angulation Range	275°Up/275°Down	275°Up/275°Down

Reusable Flexible Ureteroscope

Reusable ureteroscopes can significantly reduce medical procurement costs. Following standardized cleaning and disinfection procedures ensures effectiveness and safety.



Ultra-light Ergonomic Handle, Reduce fatigue



Reusable, Reduce cost



Ultra-clear Image

Luer Lock

With luer connector included in every scope



Dual Buttons

For image capture/freeze video recording



Ergonomic Handle
Effectively relieve fatigue during surgery

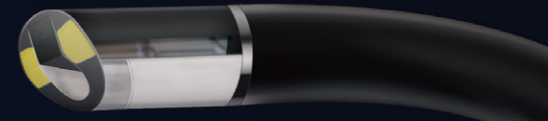
Passive Bending
Automatically bends when encountering resistance

275°Up/Down
Viewing angle

More flexible operation



8.4Fr
Insertion Tube



Optimized Graphics
CMOS+2LED image technology

Bullet Design
Drilling into the ureter is easier

Product Parameters

Insertion Tube Outer Diameter	8.4Fr/9.0Fr	Working Length of Shaft	650mm
Working Channel Diameter	3.6Fr	Angulation Range	275°Up/275°Down

Rigid Ureteroscope

Integrated design, simple operation, safe and reliable, durable, clear imaging, easy to clean.

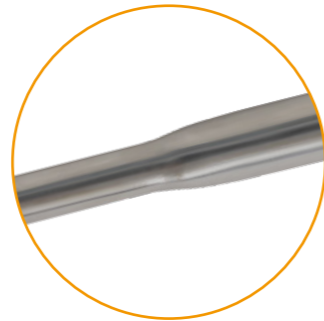
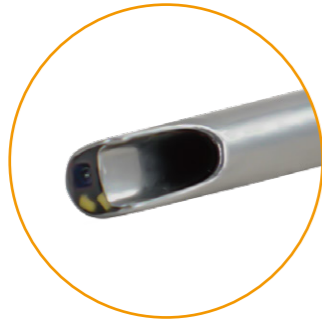
Sheath Lip Design

The tip of the rigid ureteroscope can dilate the urethra and ureter, facilitates insertion of the rear end.



Excellent image

Better imaging quality, clear image, improve work efficiency



Progressive tube sheath

It is more beneficial for patients with urethral stricture



Inflow/Outflow

Double valves make the irrigation smooth



Connecting pump

Easy and fast connection



Instrument channel

It facilitates flexible and safe sampling and treatment

φ6.5/8.4Fr

With excellent irrigation performance, improve the efficiency of surgery.

Product Parameters

Model	Bview-3001	Bview-3002
Insertion Tube Outer Diameter	8Fr/9.8Fr	6.5Fr/8.4Fr
Working Channel Diameter	5Fr	3.1Fr
Insertion Tube Length	430mm	430mm

Single Use Cystoscope

Flexible insertion tube, ultra-thin working channel, does not restrict the patient's posture, reduce the trauma caused by examination and treatment.

High Image Quality

CMOS+LED technology for clear, natural-looking images



210°Up/210°Down

Wider Angle, no blind angle in bladder and urethra

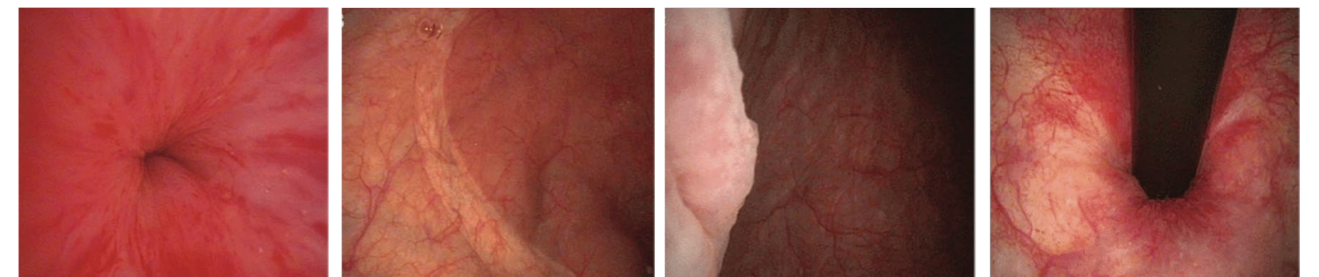


2.2mm Working Channel

Compatible with a variety of surgical instruments



Clearly present intravesical images



Product Parameters

Model	CY-F1
Insertion Tube Outer Diameter	5.2mm
Working Channel Diameter	2.2mm
Insertion Tube Length	380mm
Angulation Range	210°Up/210°Down

MIP1002

Medical Image Processor With Monitor



Photo & Video Function



Strong Compatibility



Patient Profiles Management



MIP6001

Image Processor



High Definition



Compatible With Multiple Devices



Comprehensive Feature

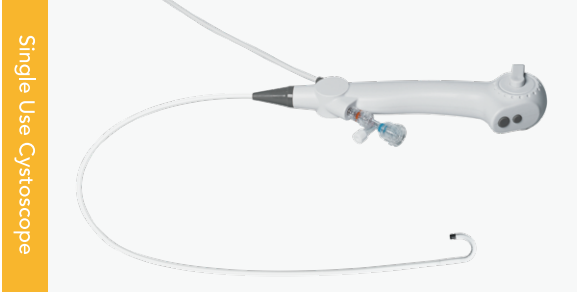
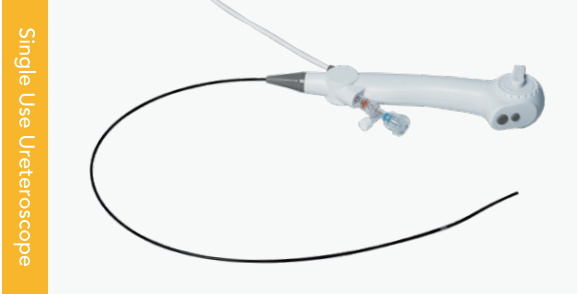
PRODUCT PARAMETERS

Model Number	MIP1002
Screen Size	10.1inch
Resolution	1280X800
Storage capacity	32 GB
Video input	10/14 pin lemo plug
Video output	AV,HDMI, SDI, DVI,USB3.0
Recording Format	JPG for photograph, MP4 for video
Function	Freeze, Snap, Recording, USB storage, White balance, Zoom in/Zoom out
Dimensions	260mm*210mm*50mm

PRODUCT PARAMETERS

Model Number	MIP6001
HDMI output resolution	1280*720 60HZ
DVI output resolution	1280*720 60HZ
Storage capacity	32 GB
Video input	10 pin lemo plug
Video output	HDMI,DVI
Function	Freeze, Snap, Recording, USB storage, White balance, Zoom in/Zoom out
Dimensions	300mm*220mm*52mm

Strong Compatibility



SHENZHEN BESDATA TECHNOLOGY CO.,LTD

503, Building #2, Xinnantian Industrial Park, No. 3179, Danzi Avenue, Laokeng Community, Longtian Street, Pingshan District, Shenzhen.China.