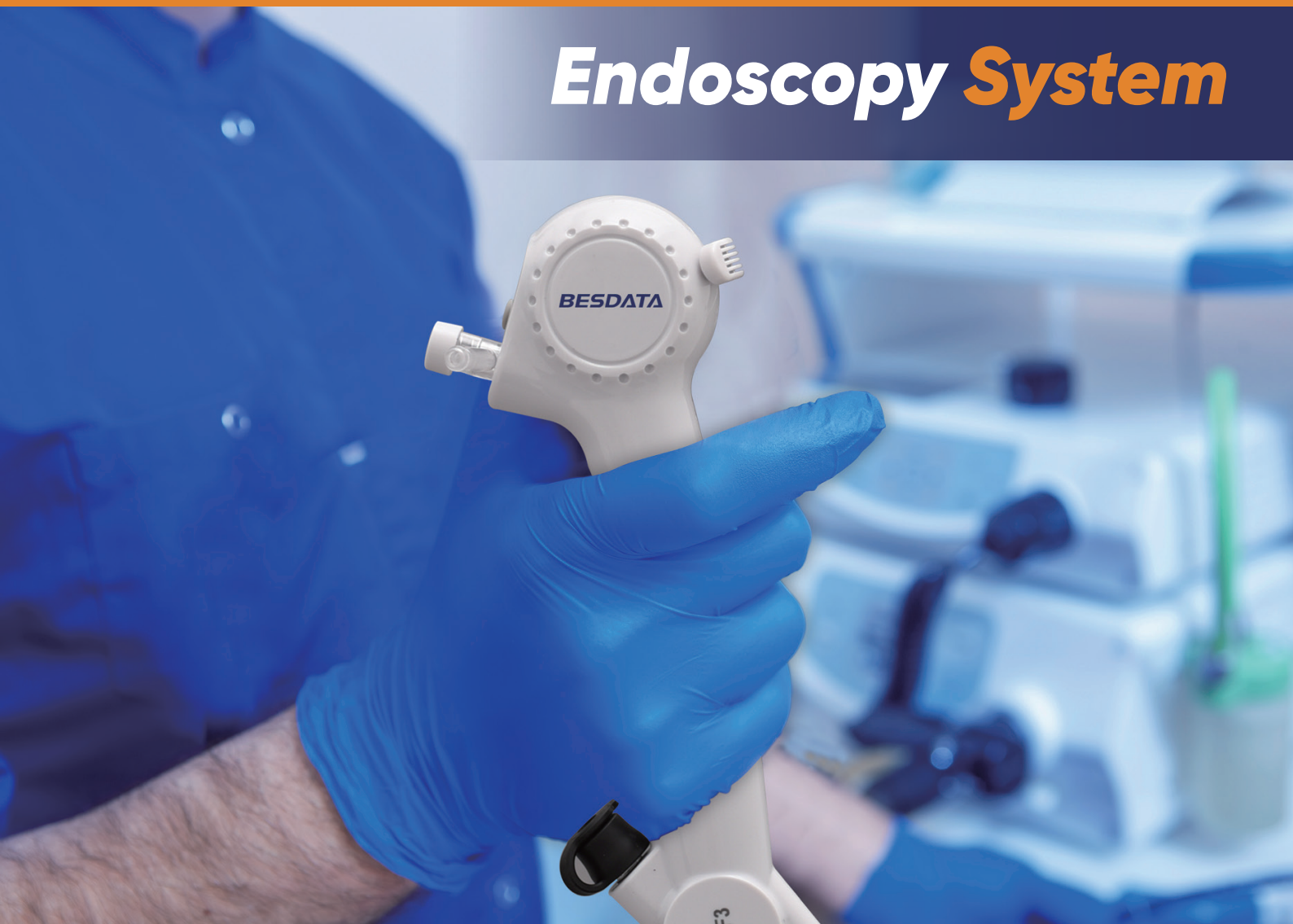


## Endoscopy System



# **BESDATA<sup>®</sup>**

## **Endoscopy System**

### **I N D E X**

<b>Medical Image Processor With Monitor</b>	<b>P01</b>
<b>Single Use Ureteroscope</b>	<b>P02</b>
<b>Flexible Disposable Bronchoscope</b>	<b>P04</b>
<b>Single Use Cystoscope</b>	<b>P05</b>
<b>Single Use Choledochoscope</b>	<b>P06</b>
<b>Single Use Hysteroscope</b>	<b>P07</b>
<b>Video Otoscope</b>	<b>P08</b>
<b>Single Use (USB) Rhinolaryngoscope</b>	<b>P09</b>

# Medical Image Processor With Monitor



## Image Processor Specification<sup>+</sup>

<b>Model</b>	<b>MIP1002</b>
<b>Name</b>	<b>Image Processor</b>
<b>Weight</b>	<b>1680g</b>
<b>Size</b>	<b>260mm*210mm*50mm</b>

<b>Screen</b>	<b>Description</b>
Screen Size	10.1inch
Screen Type	TFT LCD
Length-width Ratio	16:10
Resolution	1280X800

<b>Connectors</b>	<b>Discription</b>
Video Input	10/14 pin lemo plug
Video Output	AV,HDMI, SDI, DVI,USB3.0
Photo and Video Store	SD Card

<b>Recording Function</b>	
Recording Format	JPG for photograph, MP4 for video
Memory Capacity	32GB

<b>Function Button</b>	<b>Discription</b>
Power switch	Power on/off
Brighten the image brightness	Brighten the image brightness
Dim the image brightness	Dim the image brightness
Video	Recording video
Photo	Photograph
Zoom in/out	Zoom in or zoom out the image
White balance	Manual white balance
User mode	User mode



# Single Use Ureteroscope



- No CrossInfection
- No Sterilization
- No Scope Repairs
- Consistent Performance for Every Case
- No Reprocessing

## + Product Parameters

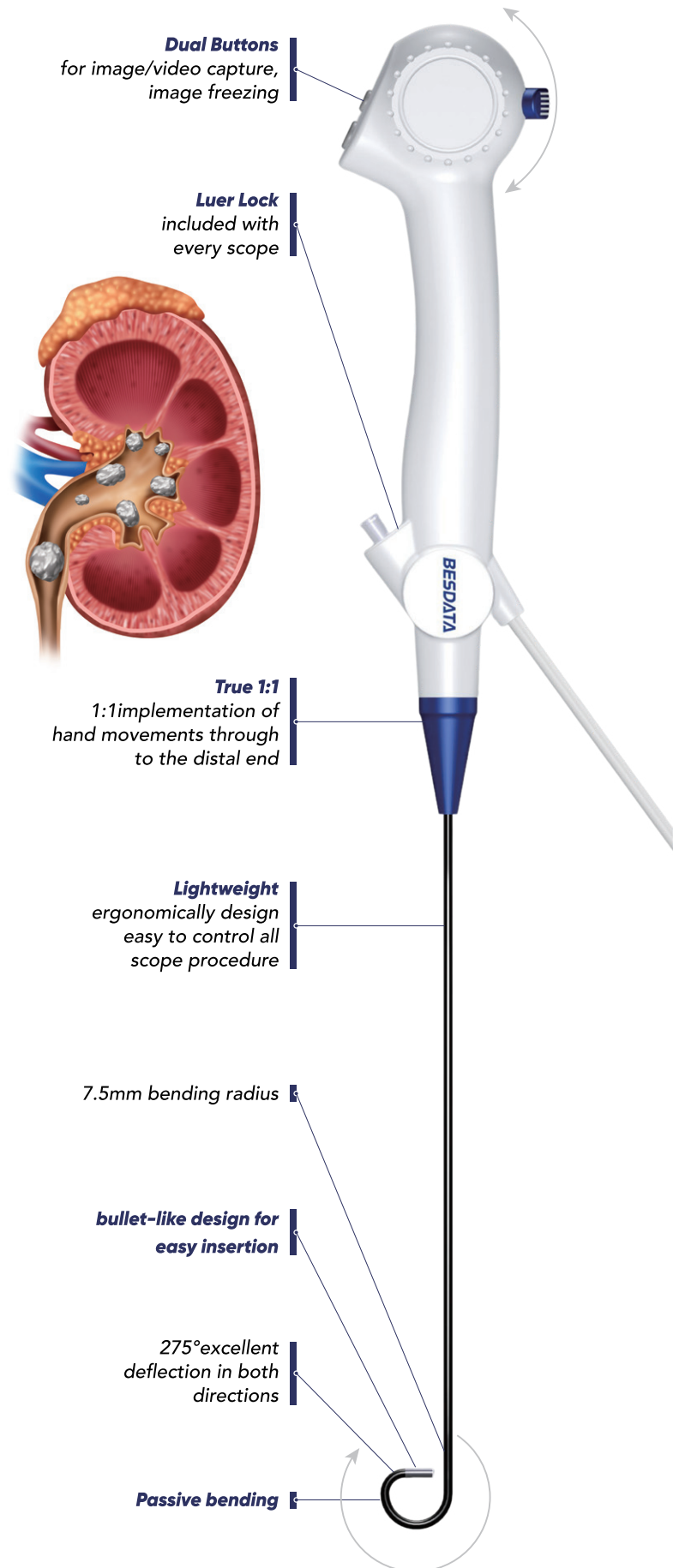
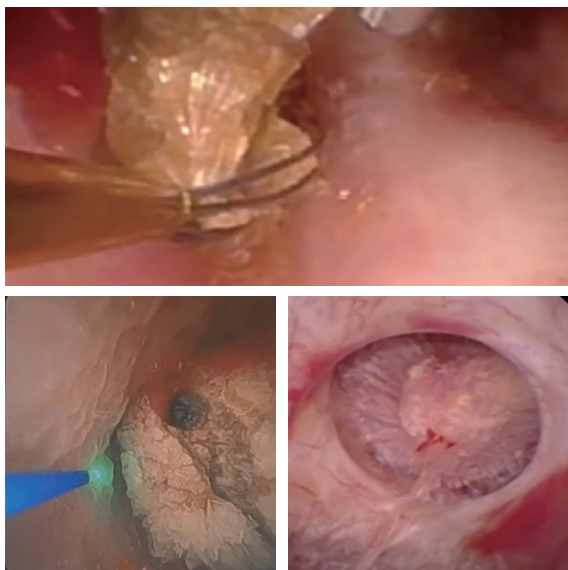
Model No.	UR-F1	UR-F2
Field of View	120°	120°
Direction of View	0°	0°
Depth of Field	3-50mm	3-50mm
Insertion Tube Outer Diameter	8.5Fr (2.8mm)	7.5Fr (2.5mm)
Working Channel Diameter	3.6Fr (1.2mm)	3.6Fr (1.2mm)
Angulation Range	275°Up/275°Down	275°Up/275°Down
Working Length of Shaft	650mm	650mm





### Why BESDATA Single-Use Digital Flexible Ureteroscope for Your Hospital?

- No costly scope repairs, no scope damage worry
- Consistant performance for every case no reprocessing
- No cross contamination
- No cleaning and sterilization of postoperative instruments, save your time and money
- No initial investment for endoscopy



# Flexible Disposable Bronchoscope



Compatible With Image Processor  
And Portable HD Monitor



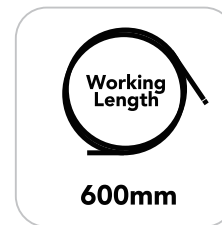
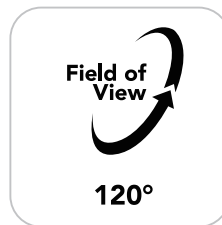
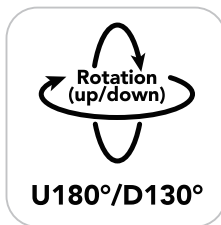
Ergonomic Design  
Suction Capabilities Single-Use  
Sterilization



CMOS+LED Technology  
High Image Quality, No fiber,  
Passive Bending

## Product Parameters+

Model Number	Insertion Tube Outer Diameter(mm)	Working Channel(mm)
BR-F1	2.8	1.2
BR-F2	3.8	/
BR-F3	5.2	2.2
BR-F4	5.8	2.8

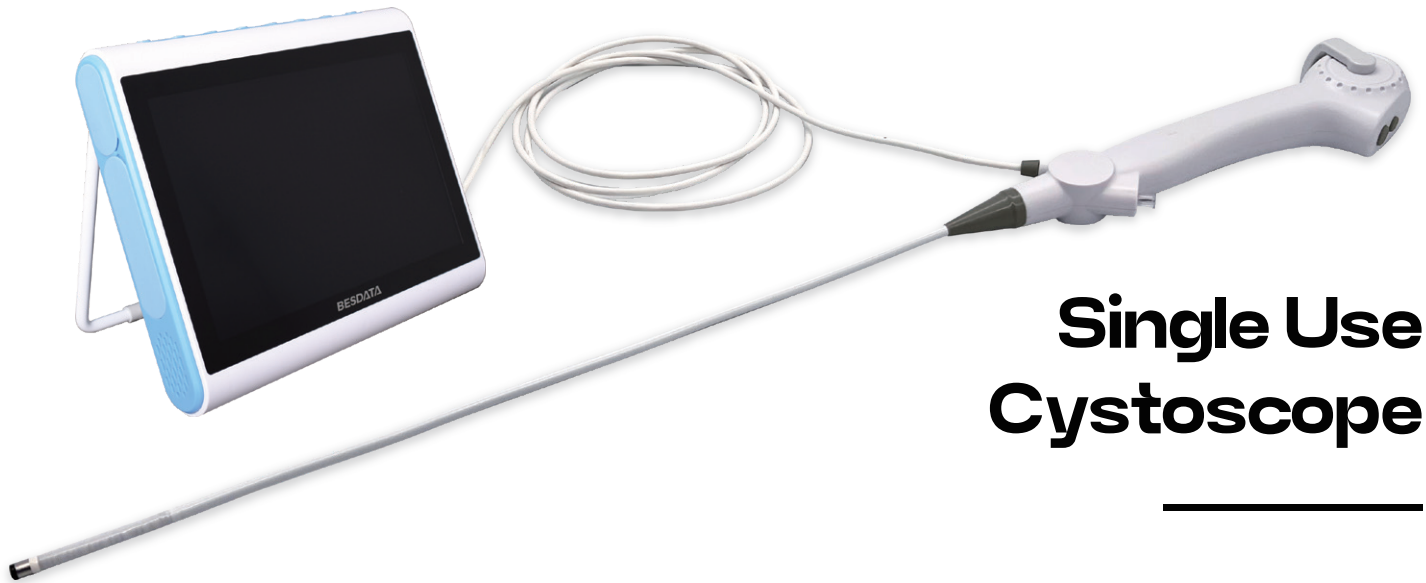


### Application:

Pneumology: bronchoscopy, peripheral observation and interventional therapy. for bedside procedures in the intensive care unit, operating room and bronchoscopy suite.

### Specifications:

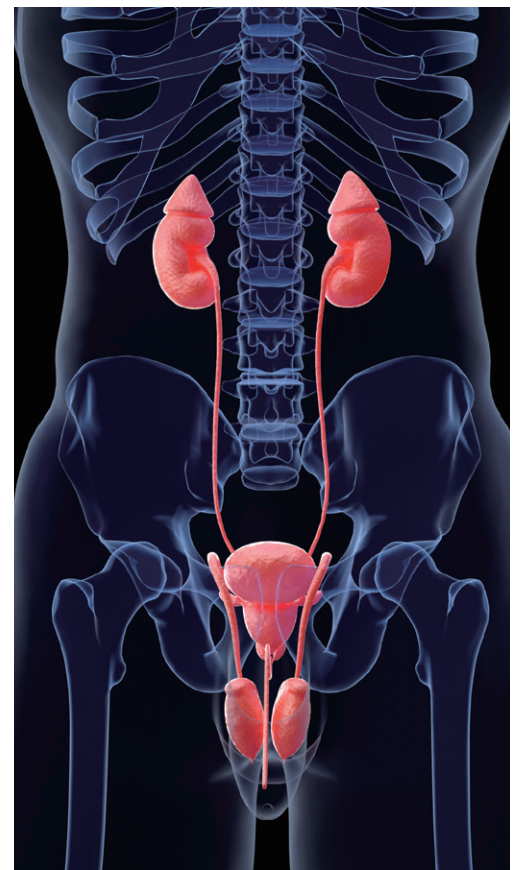
Bronchoscopy procedures such as secretion management, airway intubation, percutaneous tracheostomy, double lumen endotracheal tube placement and biopsy.



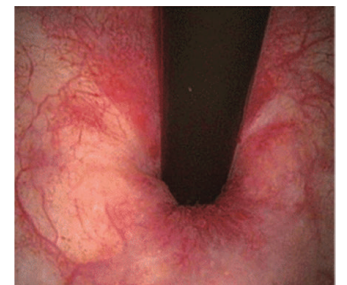
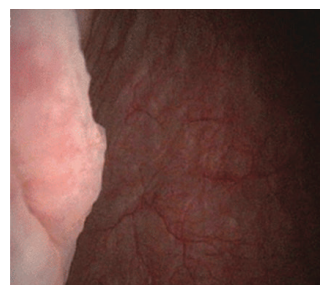
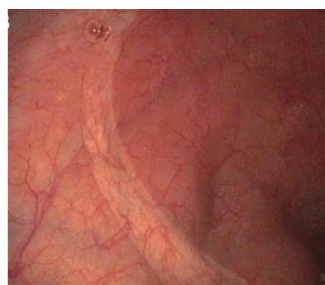
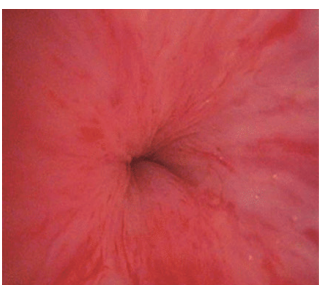
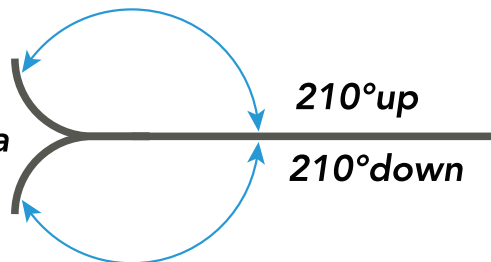
# Single Use Cystoscope

## Product Parameters<sup>+</sup>

Model No.	CY-F1
Field of View	120°
Direction of View	0°
Depth of Field	5-100mm
Insertion Tube Outer Diameter	5.2mm
Working Channel Diameter	2.2mm
Angulation Range	210°Up/210°Down
Working Length of Shaft	380mm



/  
Navigate in the  
bladder and urethra



# Single Use Choledochoscope



Compatible with  
conventional  
accessories



## Product Parameters +

<i>Model No.</i>	<i>CH-F1</i>
<i>Field of View</i>	<b>120°</b>
<i>Direction of View</i>	<b>0°</b>
<i>Depth of Field</i>	<b>5-100mm</b>
<i>Insertion Tube Outer Diameter</i>	<b>5.2mm</b>
<i>Working Channel Diameter</i>	<b>2.2mm</b>
<i>Angulation Range</i>	<b>180°Up/130°Down</b>
<i>Working Length of Shaft</i>	<b>380mm</b>
<i>Compatible Monitor</i>	<b>BD-M7 MIP1002 (HD Monitor)</b>



# Single use Hysteroscope



## Specification<sup>+</sup>

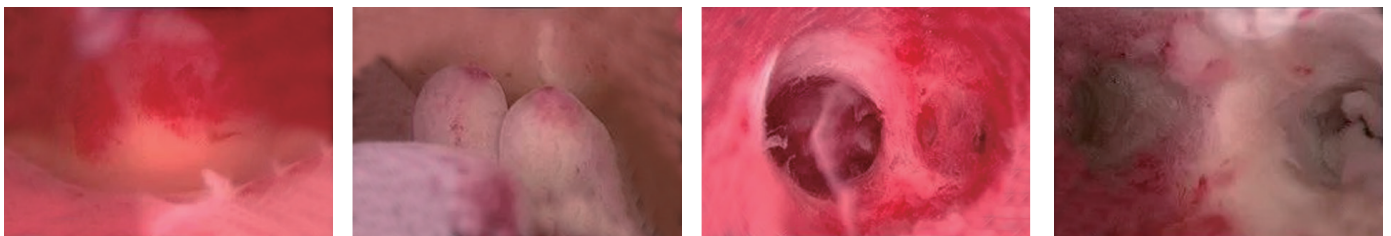
<b>Model No.</b>	<b>HY-H1</b>
<b>Field of View</b>	<b>120°</b>
<b>Direction of View(DOV)</b>	<b>0°</b>
<b>Depth of Field</b>	<b>5-100mm</b>
<b>Insertion Tube Outer Diameter</b>	<b>Φ5.2mm</b>
<b>Working Channel</b>	<b>Φ2.2mm</b>
<b>Working Length</b>	<b>330mm</b>

- Efficient and fast diagnosis and inspection.
- No need to sterilize.
- Quick operation covering the outpatients needs.
- Efficient workflow with in-office exams.

- All in one piece, handheld, portable, no need assemble before use.
- Instant endometrial imaging, Bright 10inch color LCD screen
- Still image and video capture
- Channel for fluid infusion.

### Clinical Application:

1. Abnormal Uterine Bleeding (AUB)
2. Evaluation of the uterine cavity for subfertility and infertility
3. Early cancer screening for endometrial cancer
4. Endometrial assessment after removal of "lost" IUDs and other foreign bodies



# Video Otoscope



## Product Parameters<sup>+</sup>

<b>Model Number</b>	<b>VOT-01</b>
<b>Display</b>	<b>3inch LCD</b>
<b>Resolution</b>	<b>640*480(RGB)</b>
<b>Power</b>	<b>&lt;2W</b>
<b>Weight</b>	<b>280g</b>
<b>Illuminance</b>	<b>Natural white(6leds)</b>
<b>Resolution</b>	<b>1280*720px</b>
<b>Image/Video function</b>	<b>Yes</b>
<b>Output</b>	<b>USB output</b>
<b>Memory type</b>	<b>Micro SD card 32GB</b>
<b>Battery type</b>	<b>Rechargeable lithium battery</b>
<b>Capacity</b>	<b>1350mAh</b>
<b>Cycle life of battery</b>	<b>&gt;300 times</b>
<b>Battery working time</b>	<b>&gt;240mins</b>
<b>Charging time</b>	<b>&lt;120mins</b>



Scope Order Number	Length of Scope (mm)	Working Length (mm)	Max OD (mm)	Field of View	Direction of View (DOV)
308019	45	30	4.2	120°	0°
308020	110	80	4.2	120°	0°
308021	190	165	4.2	120°	0°
308022	200	175	7	120°	0°
308044	200	175	5.5	120°	70°
308045	200	175	6	120°	90°
308041	200	175	4.2	120°	0°
308043	190	165	3.6	120°	0°

# Single Use USB Rhinolaryngoscope



Nose



Throat

Order Number	Distal End Diameter	Rotation (up/down)	Field of View	Working Length
RL-S1	3.8mm	U130°/D130°	120°	300mm



◆ **USB Output:**

Compatible to hardware with USB Video input Everywhere E.N.T

◆ **HD Image**

◆ **Slim Insertion Tube**

◆ **Multi-function buttons: Photo, Video recording**

## Single Use Rhinolaryngoscope



### Product Parameters<sup>+</sup>

Model No.	RL-S1
Field of View	120°
Direction of View	0°
Depth of Field	5-100mm
Insertion Tube Outer Diameter	Φ3.8mm
Insertion Tube Length	350mm
Angulation Range	Up180°/Down 130°
Compatible monitor	MIP1002

**Application:**

Rhinolaryngological examination and diagnosis in E.N.T.

**Features:**

- Good image quality
- Ergonomic design
- High mobility
- Easy handling
- Straightforward documentation



**Always better solution**

**BESDATA<sup>®</sup>**

---

✉ [support@besdatatech.com](mailto:support@besdatatech.com)

☎ +86-755-84416070

📍 503, Building #2, Xinnantian Industrial Park, No. 3179, Danzi Avenue, Laokeng Community, Longtian Street, Pingshan District, Shenzhen