

Liquid nitrogen cryosurgery



EROND CRYO mini/maxi[®]
...state-of-the-art cryosurgery



The EROND CRYO® offers full compatibility with other popular liquid nitrogen units, i.e. spray apertures and contact probes for other systems may be used with the EROND CRYO® units as well.



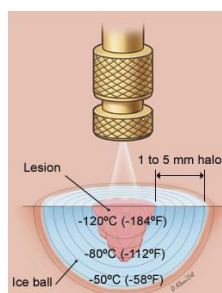
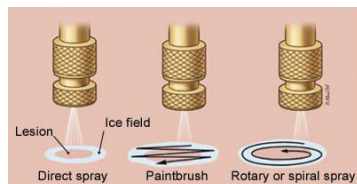
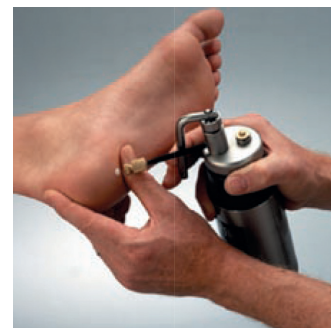
Apparatus

The EROND CRYO is available in two sizes: **EROND CRYO® Maxi** with 500 ml capacity (20 - 24 hrs. static holding time) and **EROND CRYO® Mini** offering a 350 ml capacity (12 - 14 hrs. static holding time).

Each unit comes with a set of spray applicators for most common lesions (e.g. warts, small tumors etc.). Optionally, contact probes are available in various sizes. These probes are particularly useful to control the lateral spread of the freeze (e.g. near the eye or in the oral cavity). Contact probes are selected to fit the actual lesion, and they offer a deep freeze with minimal lateral spread.

Applications

Cryosurgery using liquid nitrogen is the treatment of choice or an alternate method of treatment for many skin lesions including: verruca, basal cell carcinoma, actinic keratosis, lentigo, condyloma accuminata, cervical erosions, molluscum contagiosum, skin tags, naevus just to mention a few. More information can be found in published literature of which some are referenced on the reverse page.



Roller base



Transportation of dewars is facilitated by an optional roller base available for dewars of 20 - 60 l capacity.

EROND CRYO units

Technical description:

Available in two sizes:

EROND® Cryo MAXI (0.5 l, 20-24 hrs. static holding time)

EROND® Cryo MINI (0.35l, 12-14 hrs. static holding time).

Techniques:

Open spray tip: superficial/in-deep freezing

Contact probe: in-deep freezing, minimal lateral spread



Liquid nitrogen storage containers

Technical description:

- Durable aluminum construction
- Sizes from 5 - 60 l capacity
- Advanced vacuum technology and superinsulation technology
- Storage with extremely low LN2 evaporation
- Handles on both sizes



Manual pump for liquid Nitrogen

Order number: PMC-1

Technical description:

- Self-priming pump specially designed for liquid nitrogen cylinders, without losses.
- Height: 700 mm.
- Netto weight: 1 kg.
- Suction depth: 500 mm
- Flow rate: 1.5l / min
- Material: shiny stainless steel, tubular.
- The polyamide plug ensures the pressure in the container.
- Bronze filter prevents the penetration of ice crystals into the surgical unit, ensuring a smooth operation



Liquid Nitrogen scoop

Order number: SR-TP-0

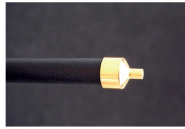
Technical description:

- Material: shiny stainless steel.
- Extraction volume approximately 100 ml of liquid nitrogen.
- Plastic covered handle.
- Extraction depth: 300 mm.
- Total length: 460 mm.
- Netto weight: 90g

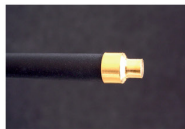




Sharp pointed contact probe. Gold plated. E.g. small angiomas, molluscum contagiosum.



2 mm contact probe. Gold plated. E.g. small flat warts, lesions near the eye, trichiasis.



4 mm contact probe. Gold plated. E.g. flat warts, lesions near the eye, lentigines.



6 mm contact probe. Gold plated. E.g. flat warts, lesions near the eye, lentigines.



10 mm contact probe. Gold plated. E.g. squamous cell/ basal cell carcinoma, hemorrhoids.



20 mm contact probe. Gold plated. E.g. squamous cell/ basal cell carcinoma.



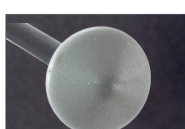
Bent spray. E.g. for lesions difficult to reach, perianal, rectal or vaginal condyloma.



Acne soft spray tip. For superficial desquamation, highly vaporized spray.



Spray tip cleaning adapter



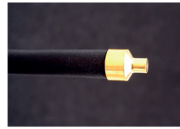
25 mm dome shaped



25 x 5 mm protrusion



1 mm contact probe. Gold plated. E.g. small warts, angiomas, lesions near the eye, trichiasis.



3 mm contact probe. Gold plated. E.g. flat warts, lesions near the eye, lentigines.



5 mm contact probe. Gold plated. E.g. flat warts, lesions near the eye, lentigines.



8 mm contact probe. Gold plated. E.g. flat warts, lesions near the eye, lentigines.



15 mm contact probe. Gold plated. E.g. squamous cell/ basal cell carcinoma, hemorrhoids.



30 mm contact probe. Gold plated. E.g. squamous cell/ basal cell carcinoma.



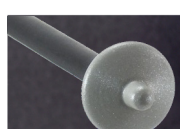
Straight spray. E.g. for lesions difficult to reach, perianal, rectal or vaginal condyloma.



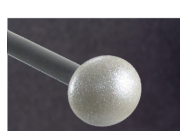
Luer lock adapter. Allows attachment of accessories with luer lock fitting - e.g. disposable needles



19 x 15 mm protrusion



19 x 5 mm protrusion



19 mm dome shaped

